

# Sagem 2401

DSL Router - Microsoft Internet Explorer

File Edit View Favorites Tools Help

Address <http://192.168.1.1/>

**SAGEM**

ADSL Down N/A  
Up N/A  
refresh  
reboot

Internet Adsl Down.

**Status**  
Internet Connection  
Wireless  
NAT  
Advanced Setup  
Advanced Status  
Management

**PPP Username and Password**

PPP usually requires that you have a user name and password to establish your connection. In the boxes below, enter the user name and password that your ISP has provided to you.

PPP Username:

PPP Password:

Save/Reboot

**SAGEM**

© 2005-2006 SAGEM Corporation. All rights reserved.

Done Internet

Open your internet browser and put 192.168.1.1 in the address par

DSL Router - Microsoft Internet Explorer

File Edit View Favorites Tools Help

Address http://192.168.1.1/

**SAGEM**

ADSL Down Up N/A N/A refresh reboot  
Internet Adsl Down.

**Wide Area Network (WAN) Setup**

Choose Add, Edit, or Remove to configure WAN interfaces.  
Choose Save/Reboot to apply the changes and reboot the system.

VPI/VCI	Con. ID	Category	Service	Interface	Protocol	Igmp	QoS	VlanId	State	Remove	Edit
8/35	1	UBR	pppoa_8_35_1	ppp_8_35_1	PPPoA	Disabled	Disabled	N/A	Enabled	<input type="checkbox"/>	Edit

Add Remove Save/Reboot

Go to advanced settings, and choose WAN. Press edit button.

**SAGEM**

© 2005-2006 SAGEM Corporation. All rights reserved.

http://192.168.1.1/dnscfg.html

DSL Router - Microsoft Internet Explorer

File Edit View Favorites Tools Help

Address http://192.168.1.1/

**SAGEM**

ADSL Down Up N/A N/A refresh reboot  
Internet Adsl Down.

**ATM PVC Configuration**

This screen allows you to configure an ATM PVC identifier (VPI and VCI) and select a service category. Otherwise choose an existing interface by selecting the checkbox to enable it.

VPI: [0-255]

VCI: [32-65535]

Service Category: UBR Without PCR

**Enable Quality Of Service**

Enabling packet level QoS for a PVC improves performance for selected classes of applications. QoS cannot be set for CBR and Realtime VBR. QoS consumes system resources; therefore the number of PVCs will be reduced. Use **Advanced Setup/Quality of Service** to assign priorities for the applications.

Enable Quality Of Service

Back Next

Insure that VPI/VCI:0/35 Then press next

**SAGEM**

© 2005-2006 SAGEM Corporation. All rights reserved.

Done

DSL Router - Microsoft Internet Explorer

File Edit View Favorites Tools Help

Address http://192.168.1.1/

**SAGEM**

ADSL Down N/A refresh  
Internet Up N/A Adsl Down. reboot

**Connection Type**

Select the type of network protocol for IP over Ethernet as WAN interface

- PPP over ATM (PPPoA)
- PPP over Ethernet (PPPoE)
- MAC Encapsulation Routing (MER)
- IP over ATM (IPoA)
- Bridging

Encapsulation Mode  
LLC/SNAP-BRIDGING

Back Next

Choose, PPPoE and LLC Then next.

© 2005-2006 SAGEM Corporation. All rights reserved.

(2 items remaining) Downloading picture http://192.168.1.1/d\_gray.qf...

Internet

DSL Router - Microsoft Internet Explorer

File Edit View Favorites Tools Help

Address http://192.168.1.1/

**SAGEM**

ADSL Down N/A refresh  
Internet Up N/A Adsl Down. reboot

**PPP Username and Password**

PPP usually requires that you have a user name and password to establish your connection. In the boxes below, enter the user name and password that your ISP has provided to you.

PPP Username: user@sodetel.net.lb

PPP Password: \*\*\*\*\*

PPPoE Service Name: password

Authentication Method: AUTO

Dial on demand (with idle timeout timer)

PPP IP extension

Use Static IP Address

Configure PPP MTU: 1492

Enable PPP Debug Mode

Back Next

Inter username & password, then write MTU to be 1492

© 2005-2006 SAGEM Corporation. All rights reserved.

Done

Internet

DSL Router - Microsoft Internet Explorer

Address: http://192.168.1.1/

**SAGEM**

ADSL Down N/A refresh  
Up N/A reboot  
Internet Adsl Down.

Status  
Internet Connection  
Wireless  
NAT  
Advanced Setup  
WAN  
LAN  
Security  
Routing  
DNS  
DSL  
Port Mapping  
Certificate  
Advanced Status  
Management

Enable IGMP Multicast, and WAN Service

Enable IGMP Multicast

Enable WAN Service

Service Name: pppoa\_8\_35\_1

Back Next

Let the parameter as it is and press next.

**SAGEM**

© 2005-2006 SAGEM Corporation. All rights reserved.

Done Internet

DSL Router - Microsoft Internet Explorer

Address: http://192.168.1.1/

**SAGEM**

ADSL Down N/A refresh  
Up N/A reboot  
Internet Adsl Down.

Status  
Internet Connection  
Wireless  
NAT  
Advanced Setup  
WAN  
LAN  
Security  
Routing  
DNS  
DSL  
Port Mapping  
Certificate  
Advanced Status  
Management

WAN Setup - Summary

Make sure that the settings below match the settings provided by your ISP.

VPI / VCI:	0 / 35
Connection Type:	PPPoE
Service Name:	pppoa_8_35_1
Service Category:	UBR
IP Address:	Automatically Assigned
Service State:	Enabled
NAT:	Enabled
Firewall:	Enabled
IGMP Multicast:	Disabled

Now, you can see all the parameter you entered  
So, you can check it, if it correct press save.

Click "Save" to save these settings. Click "Back" to make any modifications.  
NOTE: You need to reboot to activate this WAN interface and further configure services over this interface.

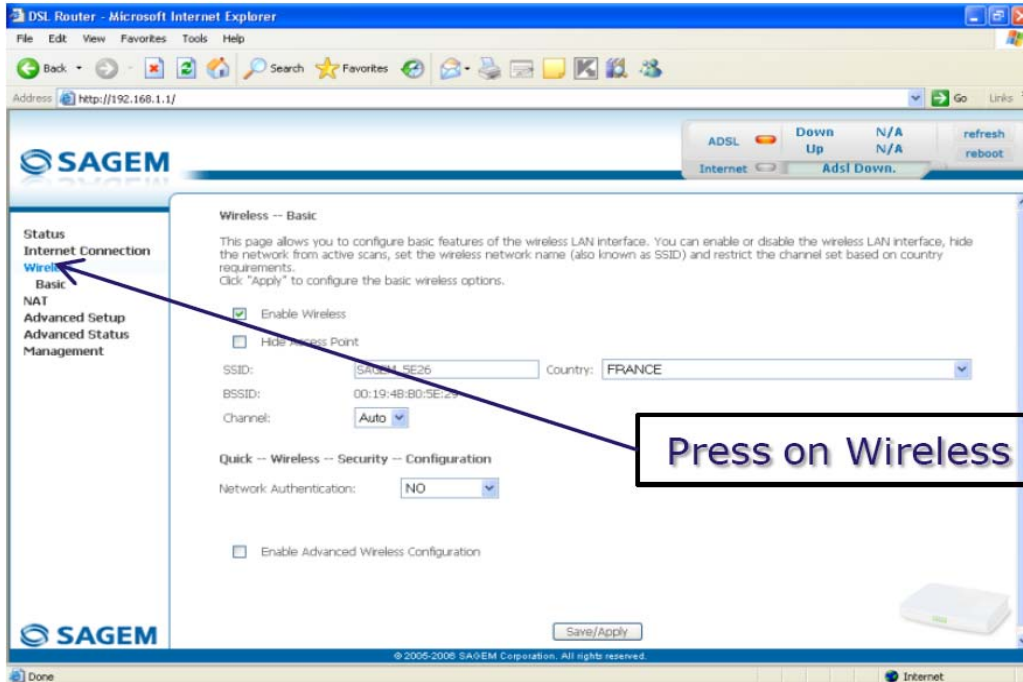
Back Save

**SAGEM**

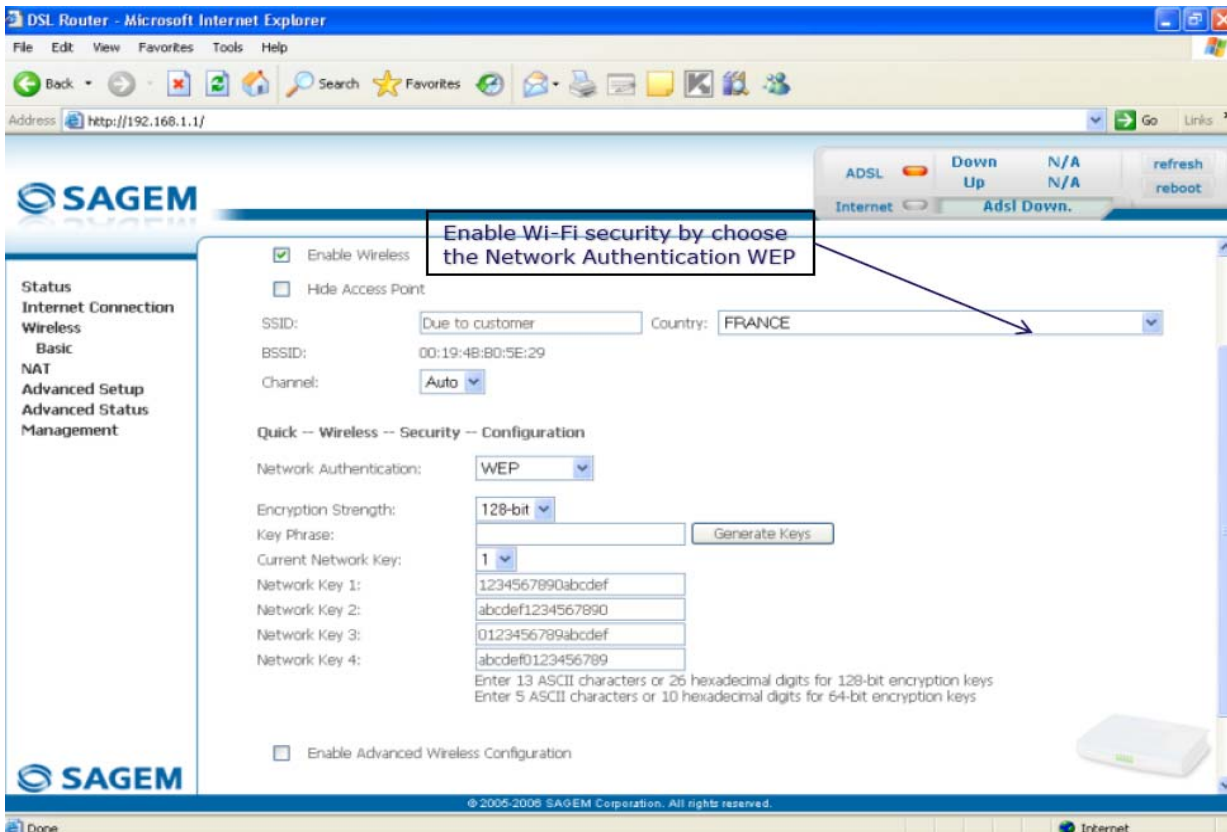
© 2005-2006 SAGEM Corporation. All rights reserved.

Done Internet

# Wi-Fi Settings For Sagem2401 :



Press on Wireless hyperlink.



Enable Wi-Fi security by choose the Network Authentication WEP



DSL Router - Microsoft Internet Explorer

File Edit View Favorites Tools Help

Address http://192.168.1.1/

**SAGEM**

ADSL Down N/A refresh  
Up N/A reboot  
Internet Adsl Down.

Status  
Internet Connection  
Wireless  
Basic  
NAT  
Advanced Setup  
Advanced Status  
Management

Quick -- Wireless -- Security -- Configuration

Network Authentication: WEP

Encryption Strength: 128-bit

Key Phrase: Generate Keys

Current Network Key: 1

Network Key 1: 1234567890abcdef

Network Key 2: abcdef1234567890

Network Key 3: 0123456789abcdef

Network Key 4: abcdef0123456789

Enter 13 ASCII characters or 26 hexadecimal digits for 128-bit encryption keys  
Enter 5 ASCII characters or 10 hexadecimal digits for 64-bit encryption keys

Enable Advanced Wireless Configuration

Save/Apply

© 2005-2006 SAGEM Corporation. All rights reserved.



Thank You !

www.sodetel.net.lb

