



# CPE's Configuration

Outsource company training

[www.sodetel.net.lb](http://www.sodetel.net.lb)



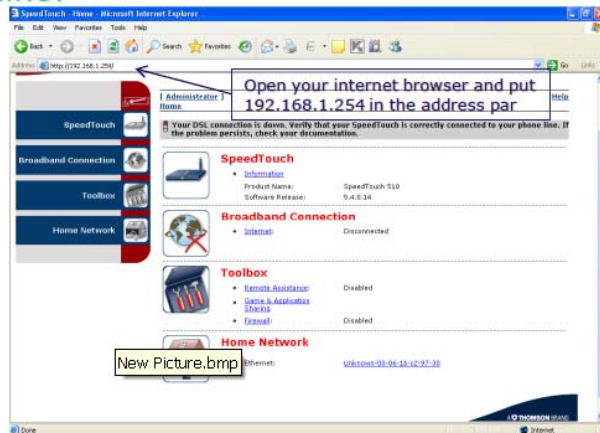
## Contents

ST-510

# ST-510

- ❖ You must configure the modem and give the line parameter to the technical support section before leave the customer premises, like:

## 1. Configure the modem:





SpeedTouch - SpeedTouch - Microsoft Internet Explorer

Address <http://192.168.1.254/cgi-bin/ST/?ce=18be=08d=08f1=-1>

speedtouch

connected to your phone line. If

Help

speedtouch

Welcome to the SpeedTouch™ Easy Setup

This wizard helps you configure your SpeedTouch™. To continue, click Next.

THOMSON BRAND

speedtouch

< Back Next > Cancel

Done Internet

javascript:openWndCentered('levizard.htm', 'EWizard', 505, 405, 'no', 'yes')



SpeedTouch - SpeedTouch - Microsoft Internet Explorer

Address <http://192.168.1.254/cgi-bin/ST/?ce=18be=08d=08f1=-1>

speedtouch

connected to your phone line. If

Help

speedtouch

Service Selection

You need to select the service you want to connect to.

Select the service of your DSL account. Click Next to continue.

Select a service:

Bridge  
Routed PPP

Description of selected service:

DESCRIPTION	Routed Connection.
REGION	World
PROVIDER	Basic

speedtouch

< Back Next > Cancel

Done Internet

Choose Routed PPP then press next

New Picture (3).bmp



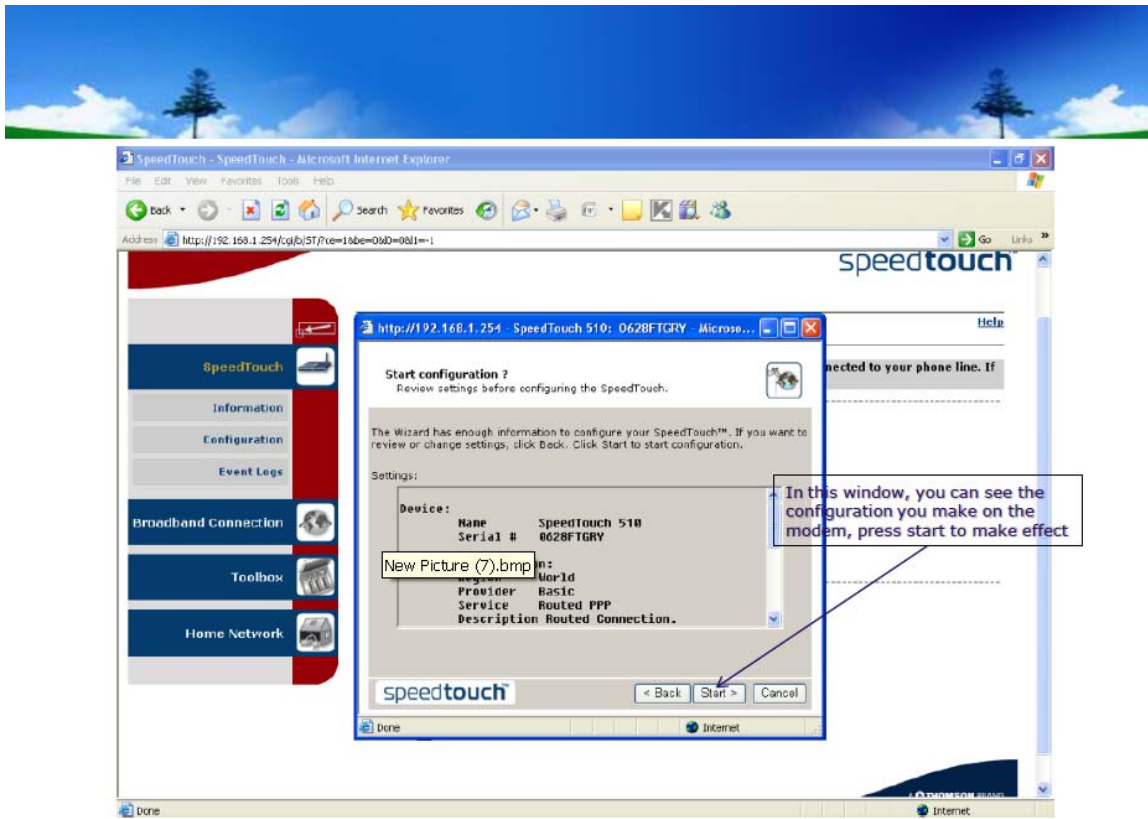
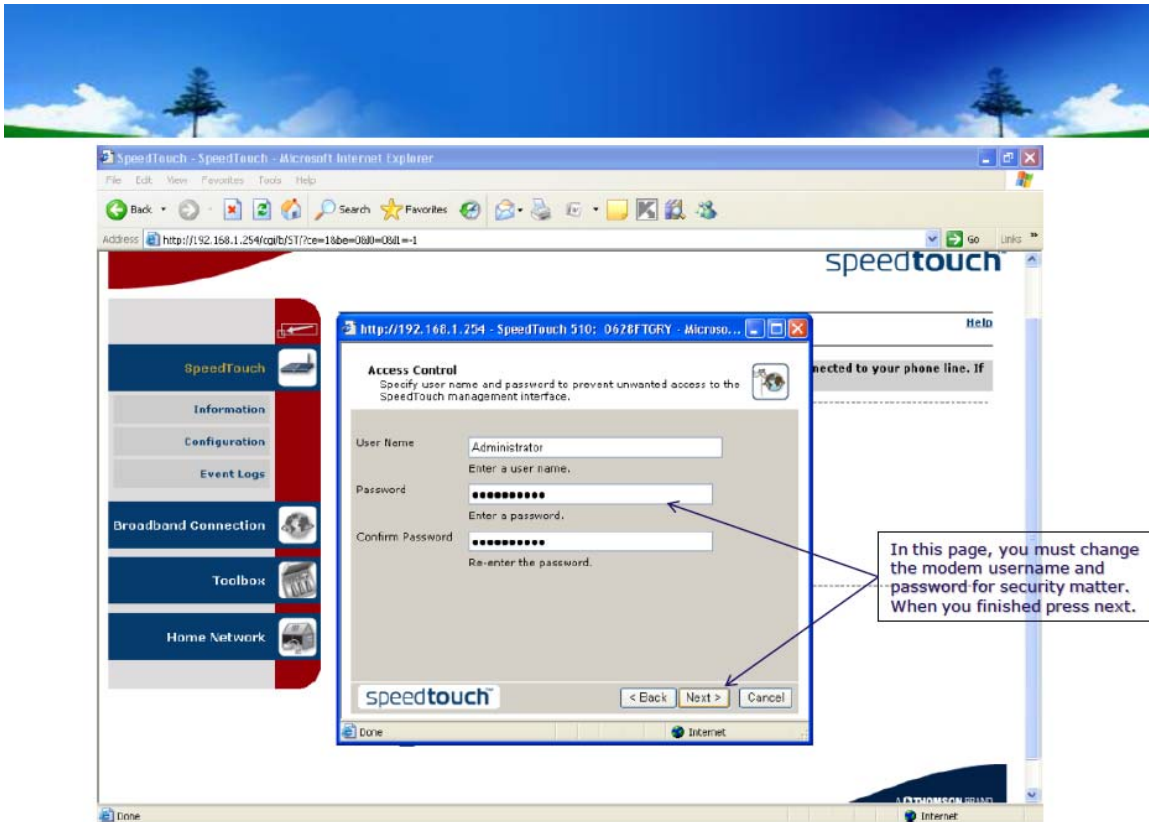
The screenshot shows the SpeedTouch configuration interface in a Microsoft Internet Explorer browser window. The main window title is "SpeedTouch - SpeedTouch - Microsoft Internet Explorer". The address bar shows "http://192.168.1.254/cgi/bst/?ce=11ba-080-081-1". The page has a sidebar with navigation options: SpeedTouch, Information, Configuration, Event Logs, Broadband Connection, Toolbox, and Home Network. The main content area is titled "Routed Internet Connection" and contains the following text: "Specify the details of the Internet connection. All information should be provided by your ISP." Below this, there is a "VPI/VCI" dropdown menu set to "0/35" and a "Connection Type" section with two radio buttons: "PPP over ATM (PPPoA)" and "PPP over Ethernet (PPPoE)". The "PPP over Ethernet (PPPoE)" option is selected. At the bottom of the form, there are buttons for "< Back", "Next >", and "Cancel". A callout box with a blue border and white background contains the text: "Insure that VPI/VCI:0/35 And connection type is PPPoE Then press next".



The screenshot shows the SpeedTouch configuration interface in a Microsoft Internet Explorer browser window. The main window title is "SpeedTouch - SpeedTouch - Microsoft Internet Explorer". The address bar shows "http://192.168.1.254/cgi/bst/?ce=11ba-080-081-1". The page has a sidebar with navigation options: SpeedTouch, Information, Configuration, Event Logs, Broadband Connection, Toolbox, and Home Network. The main content area is titled "Internet Account Settings" and contains the following text: "Specify the details of your Internet Account. All information should be provided by your ISP." Below this, there are three input fields: "User Name" with the value "us0@ sodetel.net lb", "Password" with masked characters "\*\*\*\*\*", and "Confirm Password" with masked characters "\*\*\*\*\*". Below the fields, there are instructions: "Enter your Internet connection user name.", "Enter your Internet connection password.", and "Re-enter your password.". At the bottom of the form, there are buttons for "< Back", "Next >", and "Cancel". A callout box with a blue border and white background contains the text: "Enter the username and password given by sodetel, then press enter".

New Picture (5).bmp







Speed Touch - SpeedTouch - Microsoft Internet Explorer

File Edit View Favorites Tools Help

Address http://192.168.1.254/cgi/b/ST/?co=16ba-09d-06d-1

speedtouch

SpeedTouch

Information

Configuration

Event Logs

Broadband Connection

Toolbox

Home Network

speedtouch

Completed the SpeedTouch™ Easy Setup

You have successfully completed the SpeedTouch™ Easy Setup.

To close Easy Setup, click Finish.

A THOMSON BRAND

speedtouch

< Back Finish Cancel

Done Internet

When this window appears, the modem is fully configured and ready to work.  
Note: if the internet LED is still off, you should make the configuration again.



## ❖ Line parameters:

SpeedTouch - Broadband Connection - Microsoft Internet Explorer

Address: http://192.168.1.254/cgi/ubb?ca=1&be=0&id=1&it=1

speedtouch™

[ Administrator ] Help

Home > Broadband Connection

Your DSL connection is down. Verify that your SpeedTouch is correctly connected to your phone line. If the problem persists, check your documentation.

**DSL Connection**

• [View more...](#)  
Link Status: Disconnected

**Internet**

• [View more...](#)  
Link Status: Connecting...  
Type: PPPoE

Pick a task...

javascript:GoAndRemember("/cgi/h/hh/,") Internet



SpeedTouch - Broadband Connection - Microsoft Internet Explorer

File Edit View Favorites Tools Help

Back Forward Stop Home Search Favorites

Address: http://192.168.1.254/cgi/bbb/?ce=19be-000=1011=1

---

speedtouch™


[ Administrator ] Help

Home > Broadband Connection

**Your DSL connection is down. Verify that your SpeedTouch is correctly connected to your phone line. If the problem persists, check your documentation.**

---


**DSL Connection**

 [View more...](#) In DSL connection, press view more

Link Status: Disconnected

---


**Internet**

 [View more...](#) New Picture (1).bmp

Link Status: Connecting...  
PPPoE

---

**Pick a task...**

 [Check connectivity to the Internet](#)

javascript:GoAndRemember('cgi/b/dsl/ov', '') Internet





SpeedTouch - DSL Connection - Microsoft Internet Explorer

File Edit View Favorites Tools Help

Back Forward Stop Home Search Favorites

Address http://192.168.1.254/cgi-bin/dsl/ov/?ce=18be-08d0-18d1=0

---

**SpeedTouch**

Broadband Connection

DSL Connection

Internet Services

Toolbox

Home Network

**speedtouch™**

---

[ Administrator ] Overview | Details | Help

Home > Broadband Connection > DSL Connection

**Your DSL connection is down. Verify that your SpeedTouch is correctly connected to your phone line. If the problem persists, check your documentation.**

**DSL Connection**

- Link Information

Link Status:	Disconnected
Modulation:	G.992.1 Annex A

**Pick a task...**

[See information about my broadband connection\(s\)](#)

You can see some DSL parameter.



A THOMSON BRAND

Done

Internet



SpeedTouch - DSL Connection - Microsoft Internet Explorer

File Edit View Favorites Tools Help

Back Forward Stop Home Search Favorites Refresh Print Copy Paste

Address <http://192.168.1.254/cgi/fb/dsl/dt/?ce=13be=080=181=0> Go Links

- SpeedTouch
- Broadband Connection
- DSL Connection**
- Internet Services
- Toolbox
- Home Network

[ Administrator ] [Overview](#) | [Details](#) | [Help](#)

[Home](#) > [Broadband Connection](#) > [DSL Connection](#)

**Your DSL connection is down. Verify that your SpeedTouch is correctly connected to your phone line. If the problem persists, check your documentation.**

**DSL Connection** To see more parameter, press Details

- **Link Information**

Link Status:	Disconnected
Modulation:	0.992.1 Annex A

**Pick a task...**

[See information about my broadband connection\(s\)](#)

[New Picture \(3\).bmp](#)

A THOMSON BRAND