

Go to the "Start" menu and then "Control Panel".



Control Panel will open in "Category View". Choose the category "Network and Internet Connections".



From "Network and Internet Connections", select the "Network Connections" icon.



The Network Connections Control Panel will open up. This shows you the status of all network connections that your computer has set up. In the "Network Tasks" column, choose "Create a New Connection". If "Network Tasks" is not available, go to "File" then "Create a New Connection".



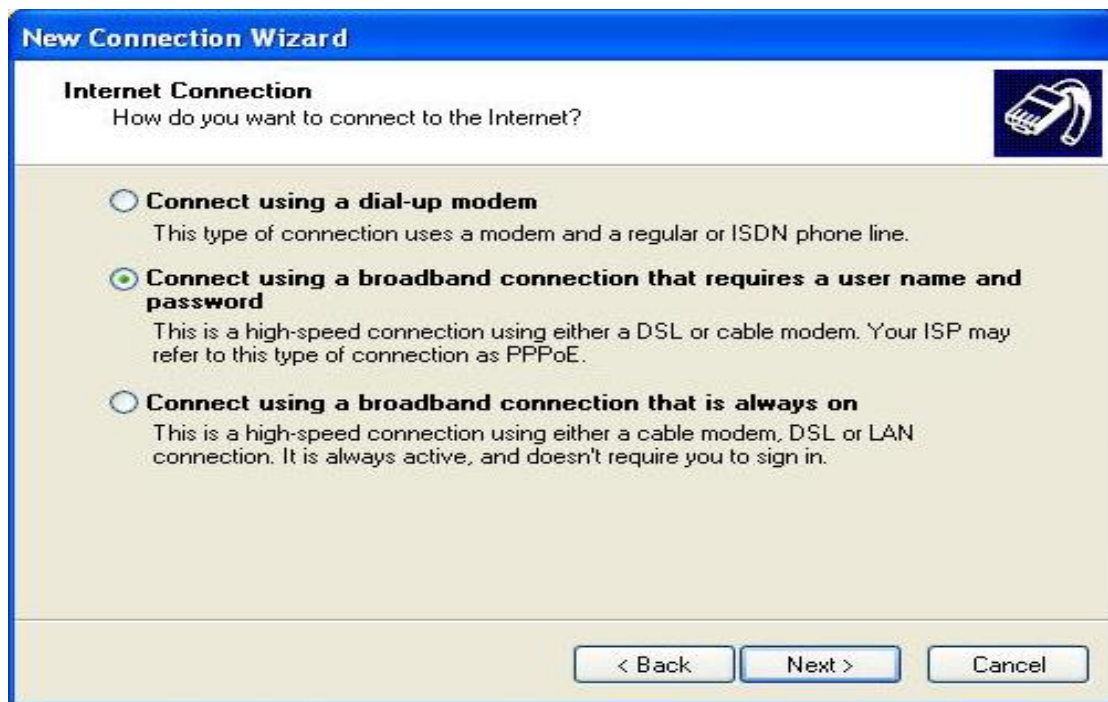
You will be presented with the New Connection Wizard. Click "Next" to continue.



The default option is to "Connect to the Internet". Make sure it is ticked before going any further. Click "Next" to continue.



By default the option "Connect using a dial-up modem" will be selected. Change this to "Connect using a broadband connection that requires a username and password". Click "Next" to continue.




Type the name you want for the connection here; the example we're using is "Sodetel". Click "Next" to continue.



In "Internet Account Information", enter the information for your account:

- Username: Enter your sodetel username, e.g. *x@sodetel.net.lb*
- Password: Enter your sodetel password
- Confirm password: Enter your sodetel password again
- Ensure the two extra options are ticked

Click "Next" to continue.



The screenshot shows a Windows-style dialog box titled "New Connection Wizard". The main heading is "Internet Account Information" with a sub-heading "You will need an account name and password to sign in to your Internet account." and a small icon of a modem. Below this, there is a paragraph of instructions: "Type an ISP account name and password, then write down this information and store it in a safe place. (If you have forgotten an existing account name or password, contact your ISP.)". There are three input fields: "User name:" containing the text "username", "Password:" containing ten black dots, and "Confirm password:" containing ten black dots. Below the input fields are two checked checkboxes: "Use this account name and password when anyone connects to the Internet from this computer" and "Make this the default Internet connection". At the bottom of the dialog are three buttons: "< Back", "Next >", and "Cancel".

Tick the box marked "Add a shortcut to this connection to my desktop". This will allow you to connect from the desktop; without having to go through any menus. Click "Finish" to continue.