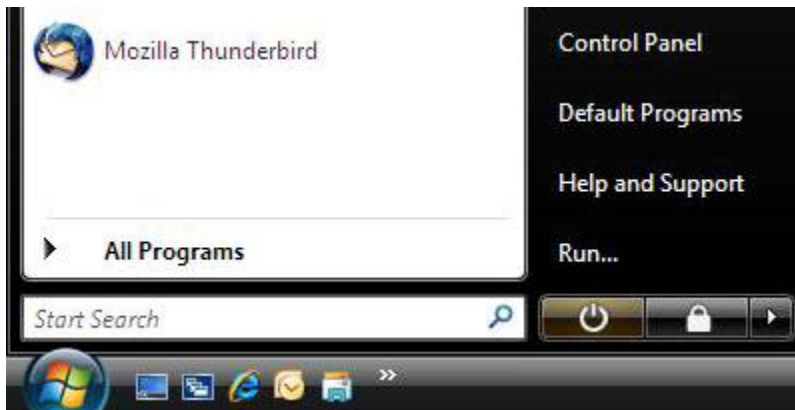


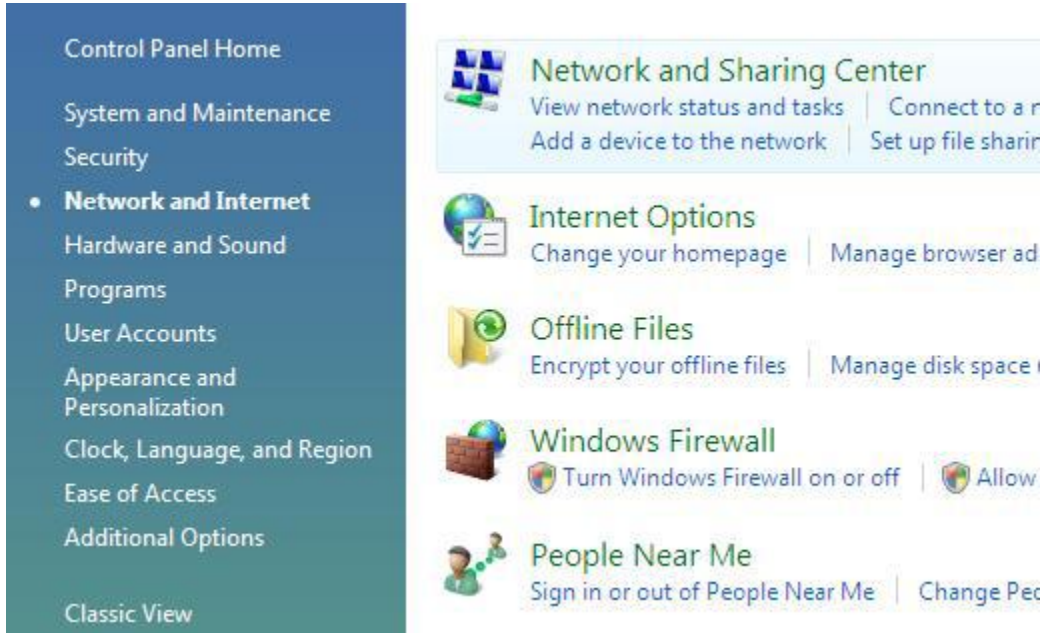
Click on the "Start" menu and then go to "Control Panel".



In the Control Panel select "Network and Internet".



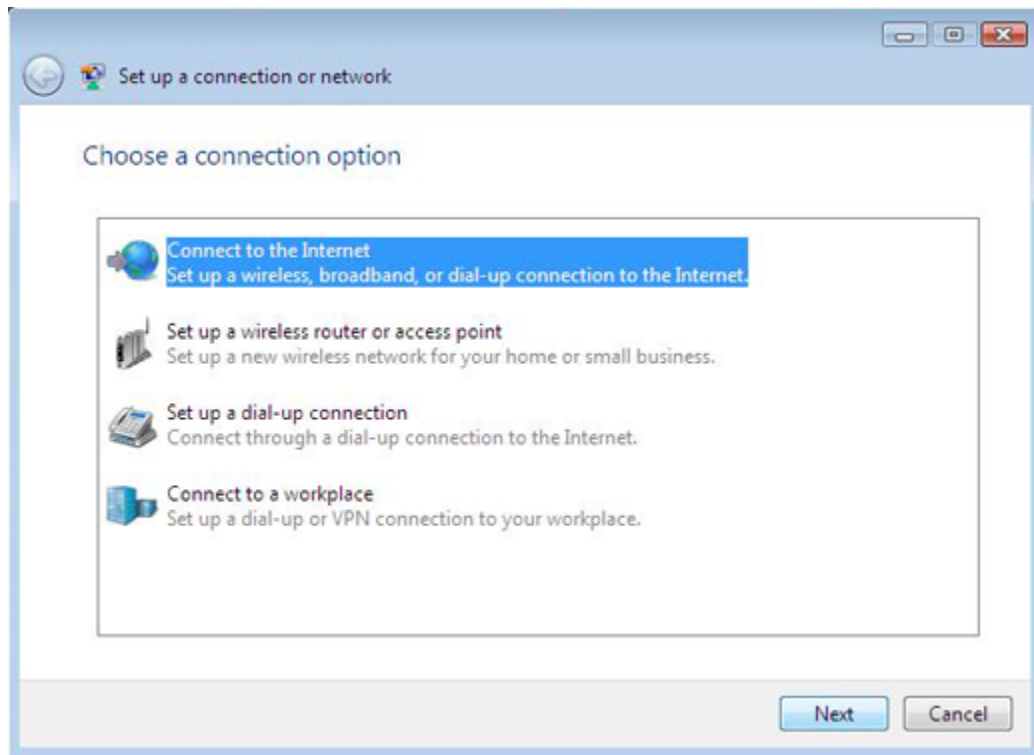
Once in the Network and Internet category, double-click "Network and Sharing Center".



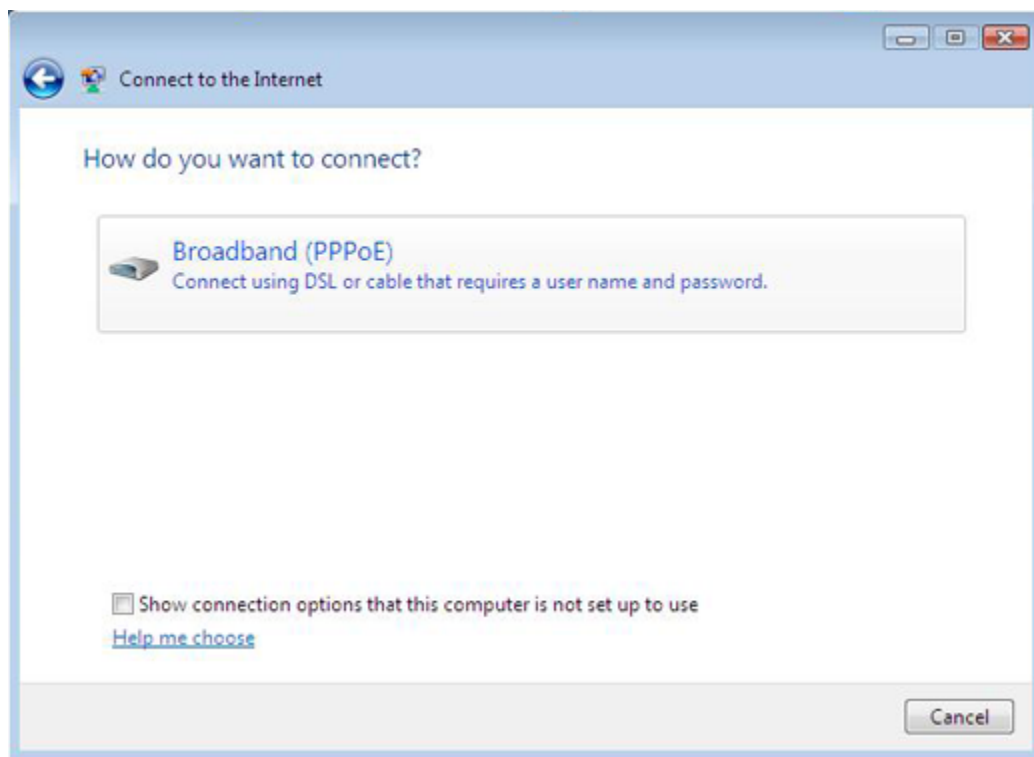
The Network and Sharing Center gives you an overview of the network status of your computer. To set up the connection, click "Set up a connection or network".



Select "Connect to the Internet" and click "Next".



We want to connect using "Broadband (PPPoE)" and not use any dialup methods.



Enter your username and password in the fields provided. You can use "Show Characters" to show the password as you type it. Once you have typed the password, untick this box to hide your password again. Click "Connect".

Connect to the Internet

Type the information from your Internet service provider (ISP)

User name:

Password:

Show characters

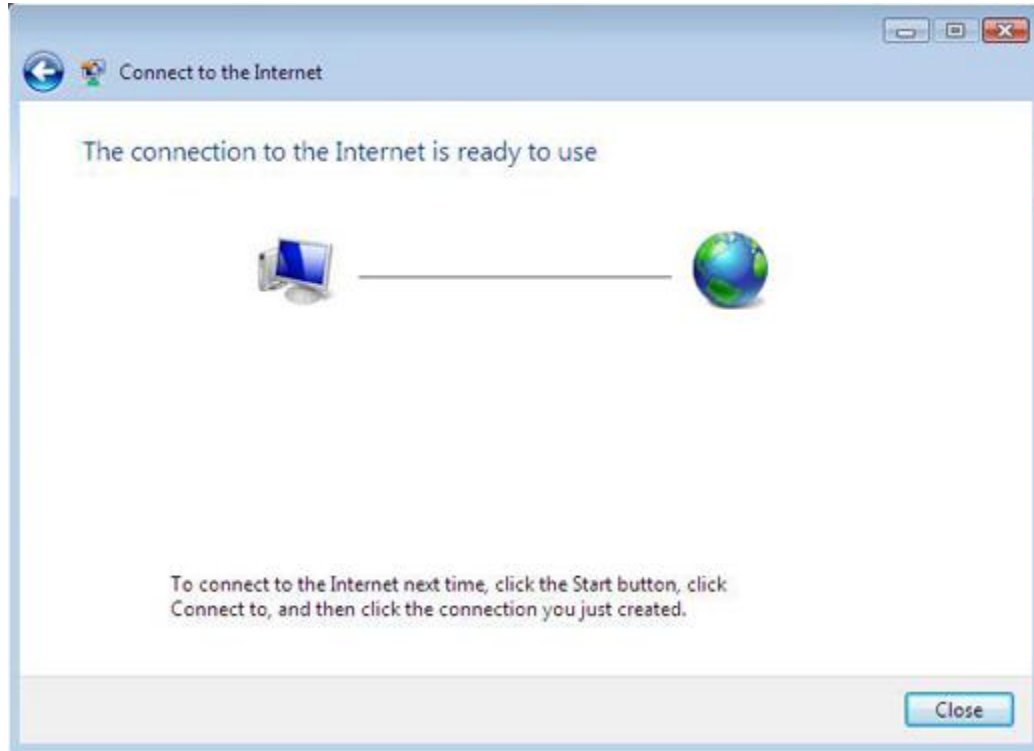
Remember this password

Connection name:

Allow other people to use this connection
This option allows anyone with access to this computer to use this connection.

[I don't have an ISP](#)

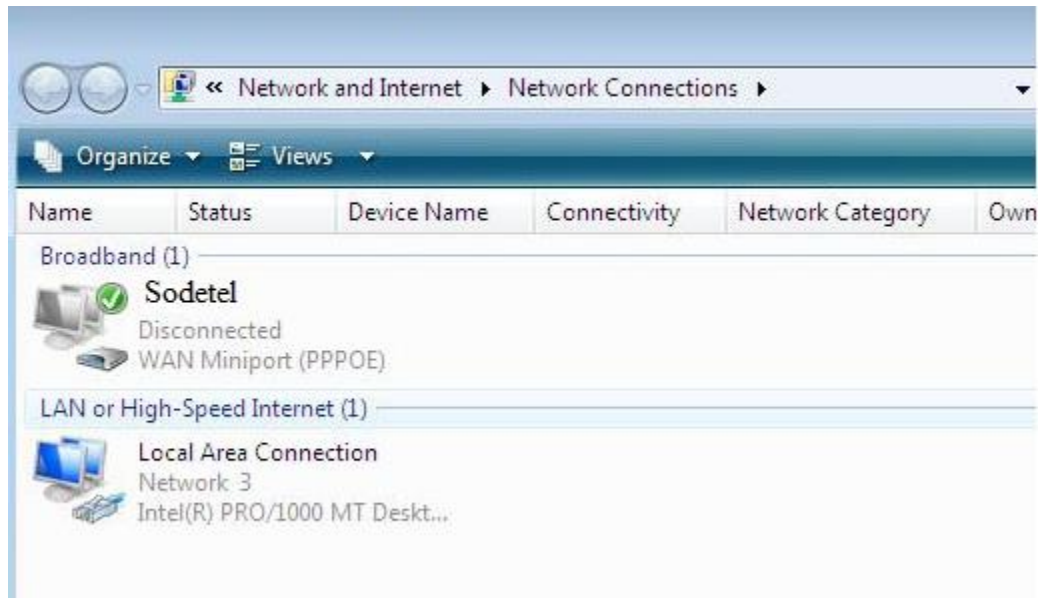
This will create the connection for you and make it ready to use. Click "Close" to continue.



You will be returned to the Network and Sharing Center. To activate the connection, click on "Manage network connections".



Under "Broadband" you will see the connection. Double-click it to activate the connection window.



Click "Connect" to connect to the Internet.



