



# CPE's Configuration

Outsource company training

[www.sodetel.net.lb](http://www.sodetel.net.lb)



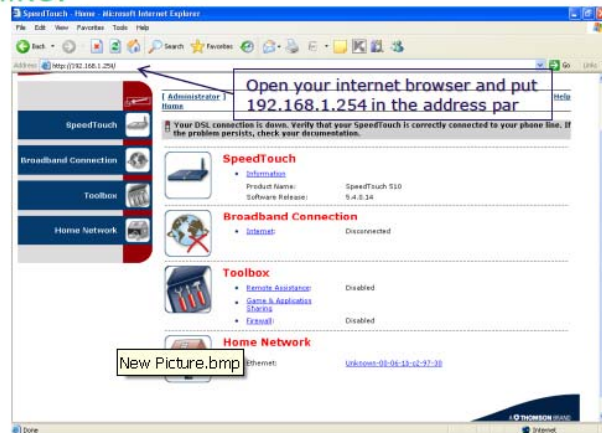
## Contents

ST-510

# ST-510

- ❖ You must configure the modem and give the line parameter to the technical support section before leave the customer premises, like:

## 1. Configure the modem:





SpeedTouch - SpeedTouch - Microsoft Internet Explorer

Address <http://192.168.1.254/cgi-bin/ST/?ce=18be=08d=08f1=-1>

speedtouch

connected to your phone line. If

Help

Welcome to the SpeedTouch™  
Easy Setup

This wizard helps you configure your SpeedTouch™. To continue, click Next.

THOMSON BRAND

speedtouch

< Back Next > Cancel

Done Internet

javascript:openWndCentered('levizard.htm', 'EWizard', 505, 405, 'no', 'yes')



SpeedTouch - SpeedTouch - Microsoft Internet Explorer

Address <http://192.168.1.254/cgi-bin/ST/?ce=18be=08d=08f1=-1>

speedtouch

connected to your phone line. If

Help

Service Selection

You need to select the service you want to connect to.

Select the service of your DSL account. Click Next to continue.

Select a service:

- Bridge
- Routed PPP

Description of selected service:

DESCRIPTION	Routed Connection.
REGION	World
PROVIDER	Basic

speedtouch

< Back Next > Cancel

Done Internet

Choose Routed PPP then press next

New Picture (3).bmp



SpeedTouch - SpeedTouch - Microsoft Internet Explorer

Address: <http://192.168.1.254/cg/bjST/?ce=11ba-080-081-1>

**Routed Internet Connection**  
Specify the details of the Internet connection. All information should be provided by your ISP.

VPI/VCI: 0/35  
Choose a VPI/VCI from the list.

Connection Type:  
 PPP over ATM (PPPoA)  
 PPP over Ethernet (PPPoE)

Buttons: < Back, Next >, Cancel

Callout text: Insure that VPI/VCI:0/35 And connection type is PPPoE Then press next



SpeedTouch - SpeedTouch - Microsoft Internet Explorer

Address: <http://192.168.1.254/cg/bjST/?ce=11ba-080-081-1>

**Internet Account Settings**  
Specify the details of your Internet Account. All information should be provided by your ISP.

User Name: user@sodetel.net.lb  
Enter your Internet connection user name.

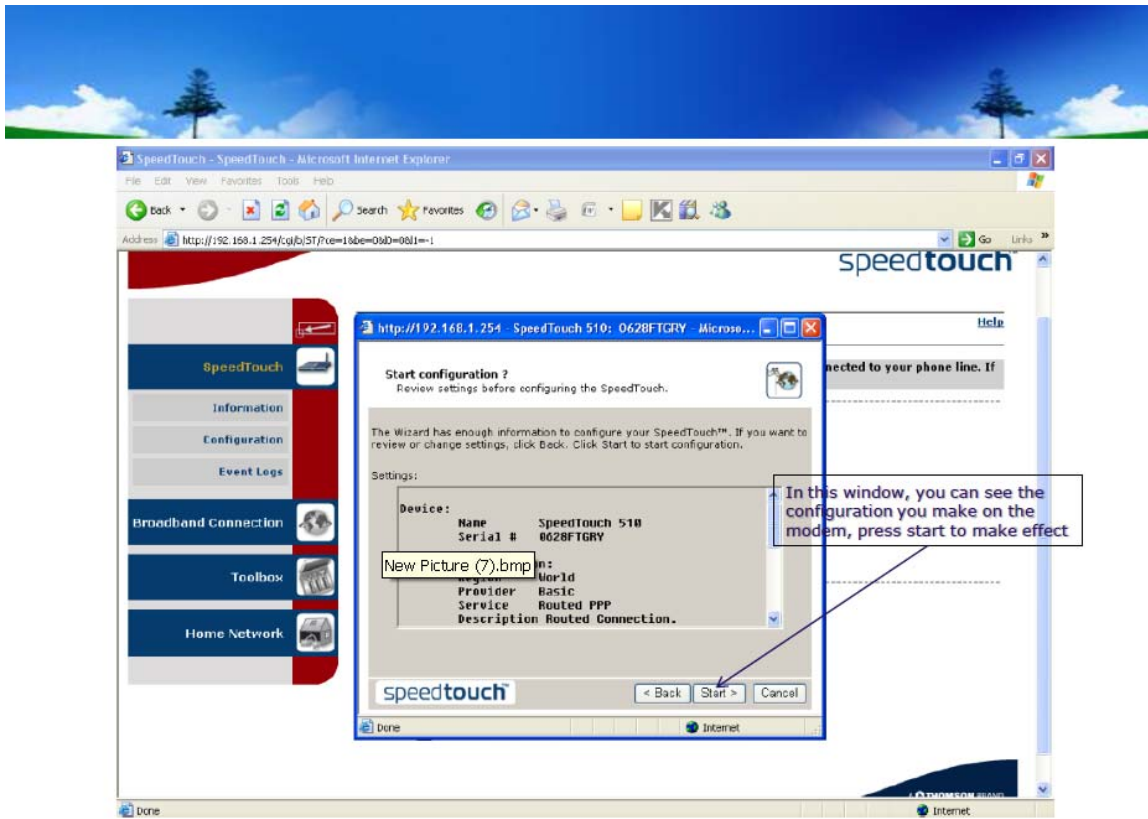
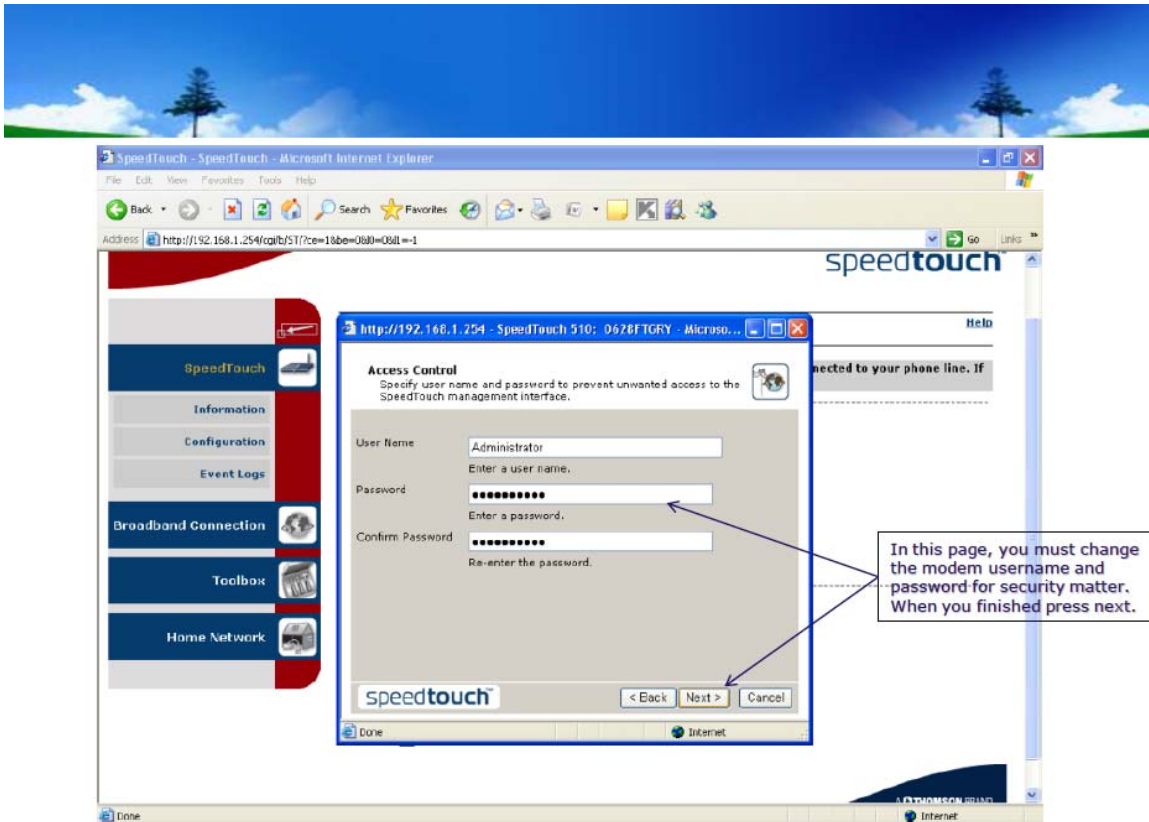
Password: [masked]  
Enter your Internet connection password.

Confirm Password: [masked]  
Re-enter your password.

Buttons: < Back, Next >, Cancel

Callout text: Enter the username and password given by sodetel, then press enter

File name: New Picture (5).bmp





Speed Touch - SpeedTouch - Microsoft Internet Explorer

File Edit View Favorites Tools Help

Back Forward Stop Home Search Favorites

Address http://192.168.1.254/cgi/b/ST/?co=16ba-09d-06d-1

speedtouch

Help

connected to your phone line. If

**Completing the SpeedTouch™ Easy Setup**

You have successfully completed the SpeedTouch™ Easy Setup.

To close Easy Setup, click Finish.

A THOMSON BRAND

speedtouch

< Back Finish Cancel

Dere Internet

Dere Internet

When this window appears, the modem is fully configured and ready to work.  
Note: if the internet LED is still off, you should make the configuration again.



## ❖ Line parameters:

SpeedTouch - Broadband Connection - Microsoft Internet Explorer

File Edit View Favorites Tools Help

Address: http://192.168.1.254/cgi/...?ca=10be=000=101=1

speedtouch™

[ Administrator ] Help

Home > Broadband Connection

Your DSL connection is down. Verify that your SpeedTouch is correctly connected to your phone line. If the problem persists, check your documentation.

**DSL Connection**

• [View more...](#)  
Link Status: Disconnected

**Internet**

• [View more...](#)  
Link Status: Connecting...  
Type: PPPoE

**Pick a task...**

javascript:GoAndRemember("/cgi/h/hh/,") Internet



SpeedTouch - Broadband Connection - Microsoft Internet Explorer

File Edit View Favorites Tools Help

Back Forward Stop Home Search Favorites

Address: http://192.168.1.254/cgi/bbb/?ce=19be-0a0=1011=1

---

speedtouch™

---

[ Administrator ] Help

Home > Broadband Connection

---

**Your DSL connection is down. Verify that your SpeedTouch is correctly connected to your phone line. If the problem persists, check your documentation.**

---

 **DSL Connection**

[View more...](#)

Link Status: Disconnected

In DSL connection, press view more

---

 **Internet**

[View more...](#)

Link Status: Connecting...  
PPPoE

Disconnect

---

**Pick a task...**

[Check connectivity to the Internet](#)

---

javascript:GoAndRemember('cui/b/dsl/ov', '')

Internet



SpeedTouch - DSL Connection - Microsoft Internet Explorer

File Edit View Favorites Tools Help

Back Forward Stop Home Search Favorites

Address http://192.168.1.254/cgi-bin/dsl/ov/?ce=18be-08d0-18d1=0

---

**speedtouch™**

---

[ Administrator ] Overview | Details | Help

Home > Broadband Connection > DSL Connection

**Your DSL connection is down. Verify that your SpeedTouch is correctly connected to your phone line. If the problem persists, check your documentation.**

---

**DSL Connection**

- Link Information

Link Status:	Disconnected
Modulation:	G.992.1 Annex A

You can see some DSL parameter.

---

**Pick a task...**

[See information about my broadband connection\(s\)](#)

---

A THOMSON BRAND

Done Internet



SpeedTouch - DSL Connection - Microsoft Internet Explorer

File Edit View Favorites Tools Help

Back Forward Stop Home Search Favorites Refresh Print Copy Paste

Address http://192.168.1.254/cgi/fb/dsl/dt/?ce=13be=080=181=0

---

speedtouch™

---

[ Administrator ] [Overview](#) | [Details](#) | [Help](#)

[Home](#) > [Broadband Connection](#) > [DSL Connection](#)

---

**Your DSL connection is down. Verify that your SpeedTouch is correctly connected to your phone line. If the problem persists, check your documentation.**

---

**DSL Connection** To see more parameter, press Details

- **Link Information**

Link Status:	Disconnected
Modulation:	0.992.1 Annex A

---

**Pick a task...**

[See information about my broadband connection\(s\)](#)

New Picture (3).bmp

---

A THOMSON BRAND