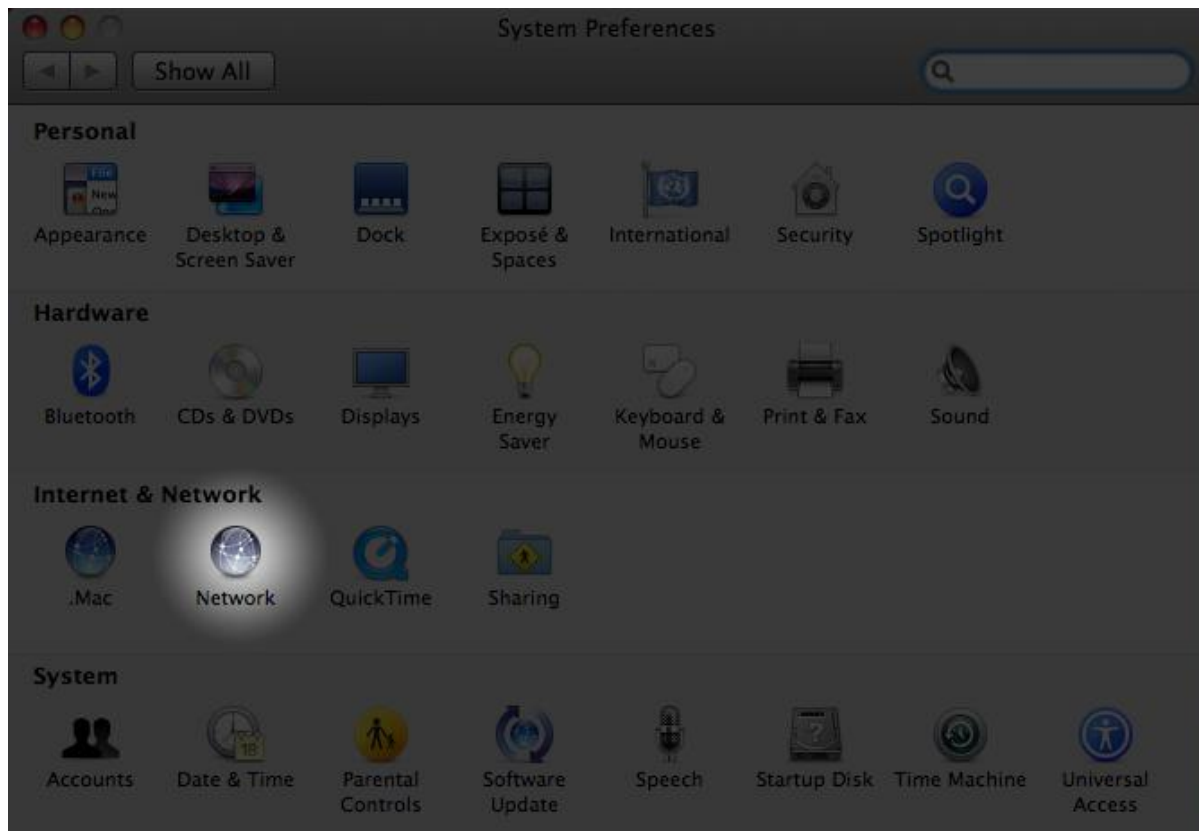


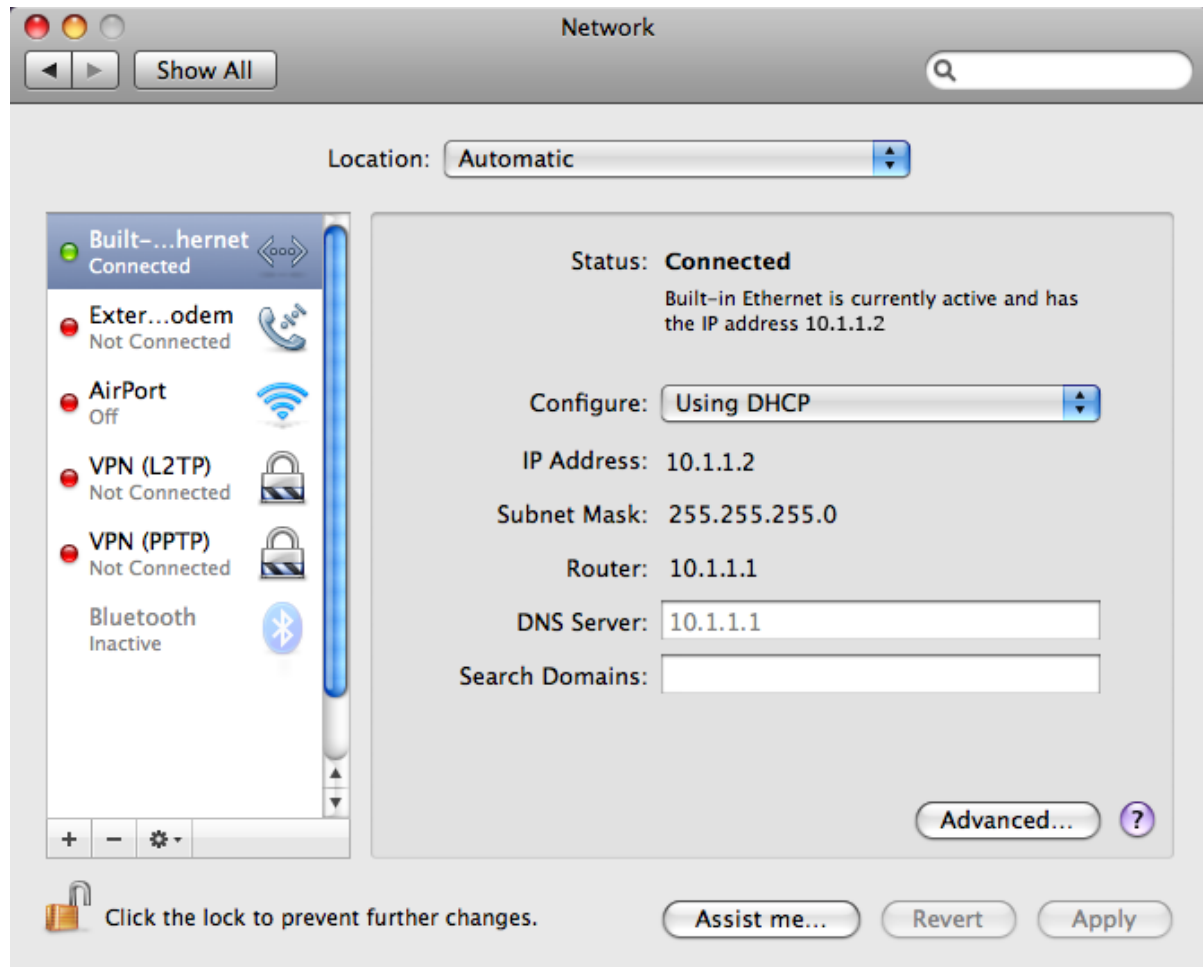
Start by going to "System Preferences" by either selecting it from gears icon in the top menu bar or open it from the Dock.



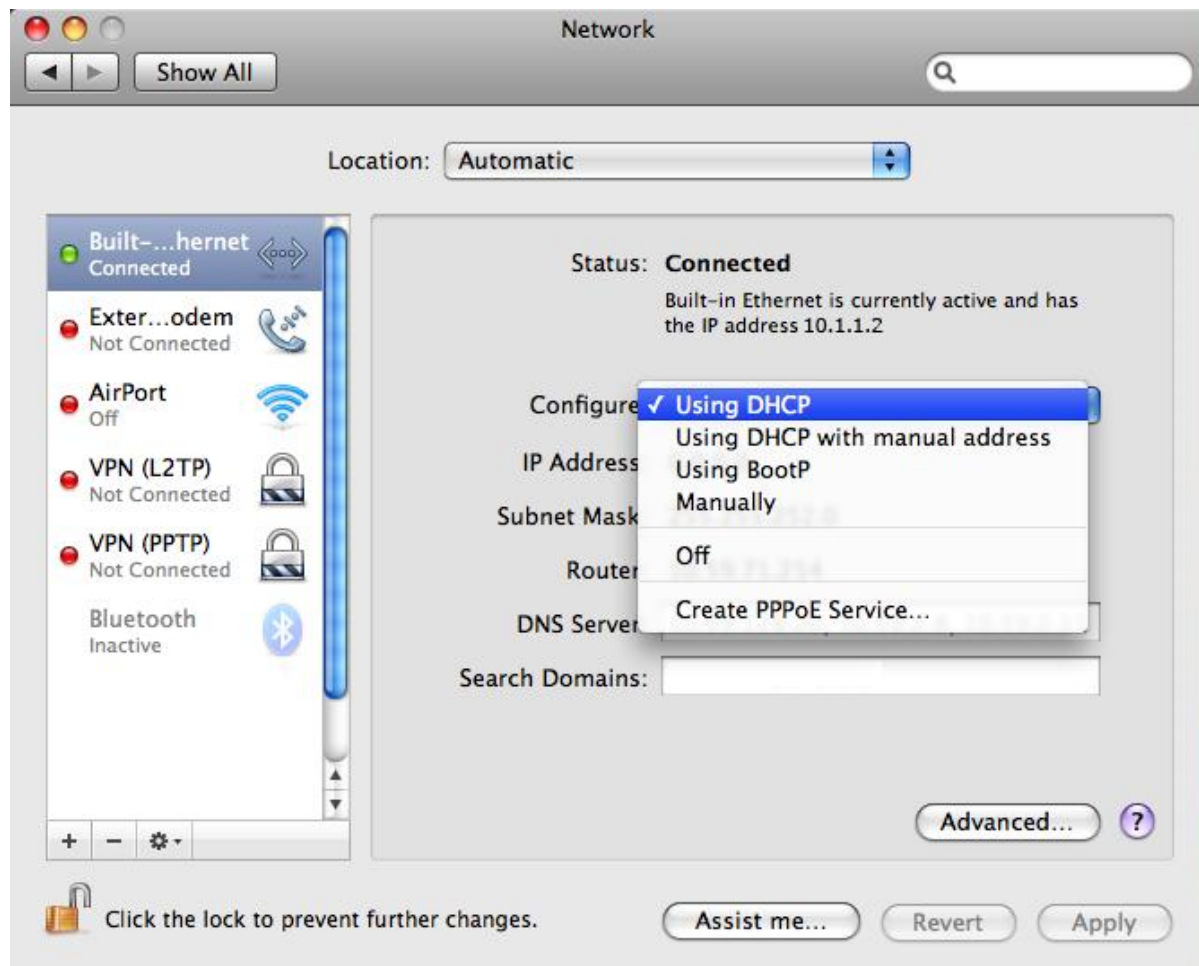
Click the "Network" icon to continue.



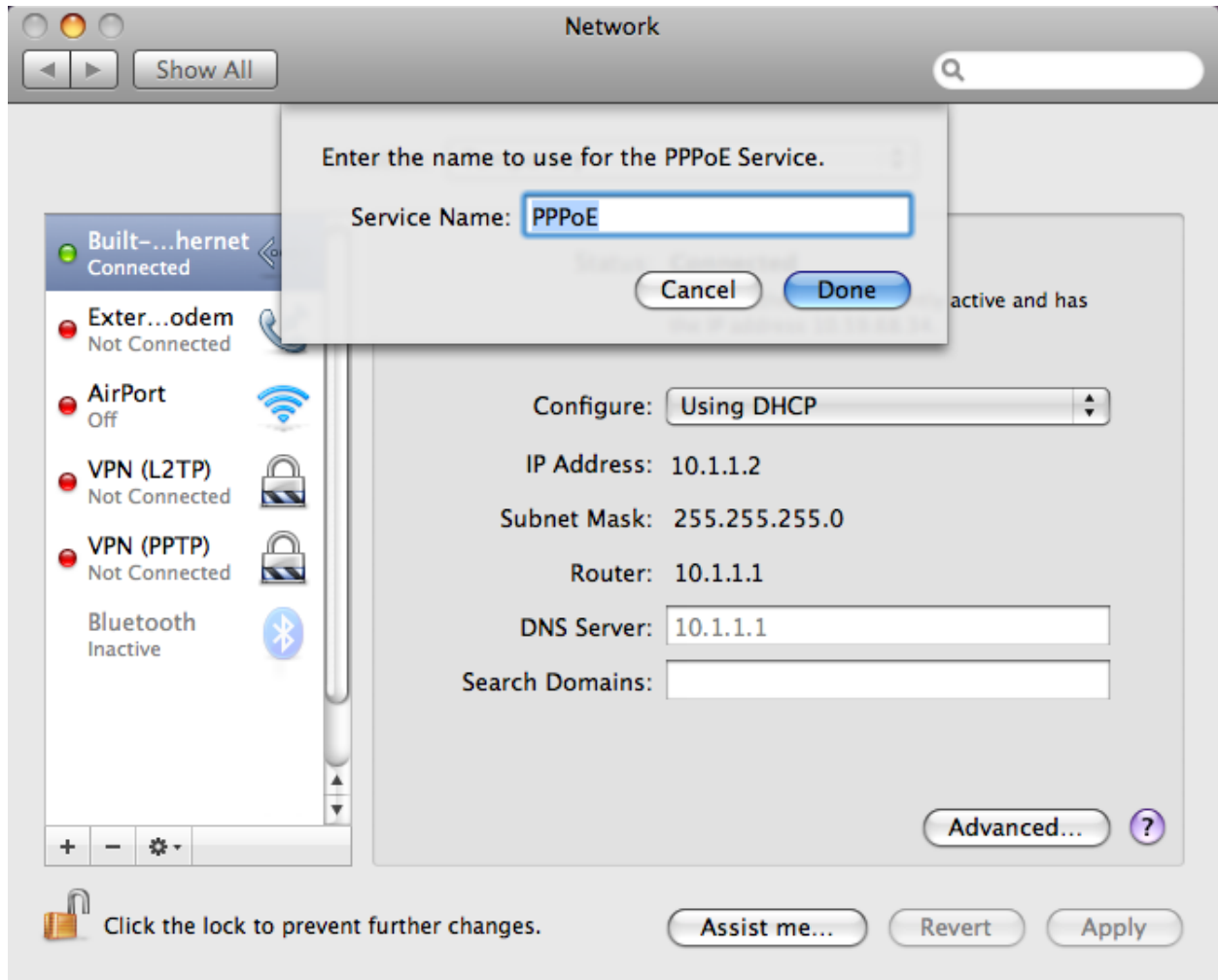
This will give you an idea of what's going on with the various network configurations on your Mac. You will automatically be directed to the highest priority connection which by default is "Built-in Ethernet". This is okay as this is where we need to be.



Click on the "Configure" menu to reveal the options for Built-in Ethernet connections.

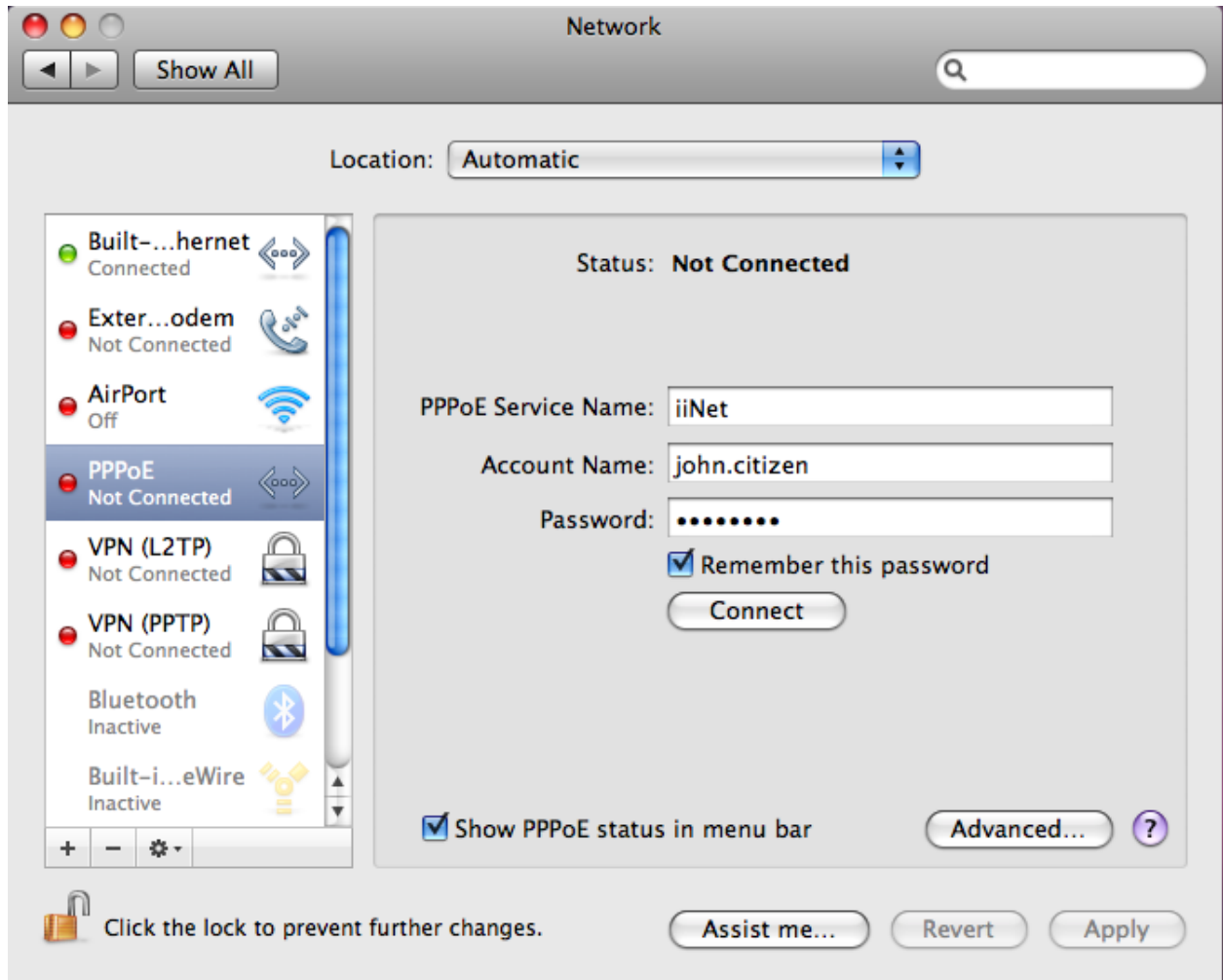


From here choose the "Create PPPoE Service" option. You will be prompted to name the connection.



Once you name the connection you will be presented with the setup screen for the PPPoE connection.\

Enter your sodetel username and password. By ticking "Show PPPoE status in menu bar" a small object will appear in your top menubar. This will allow you to control the connection from your desktop.



Click "Apply Now". When you click on "Connect", your computer will attempt to connect using PPPoE.

Notice the new icon in the top right of your screen? This new icon will allow you to activate this PPPoE connection. Once connected to the Internet, you can also use the same icon to disconnect.

