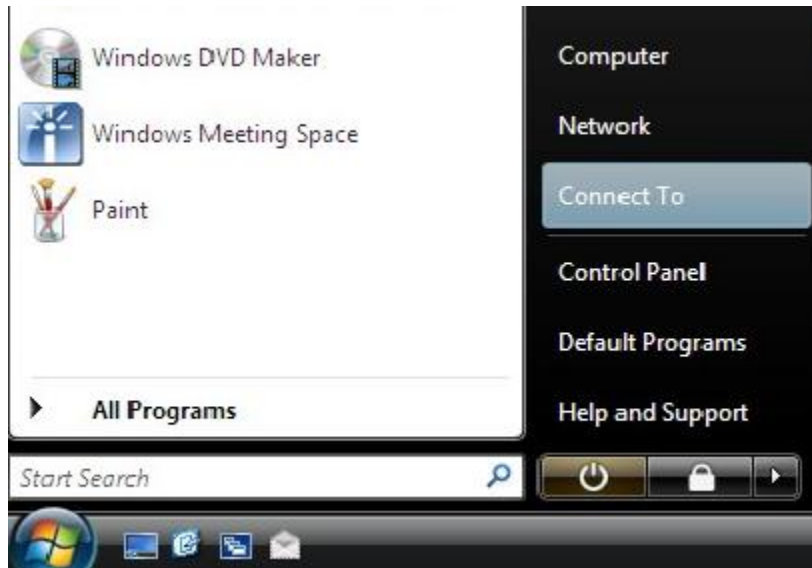
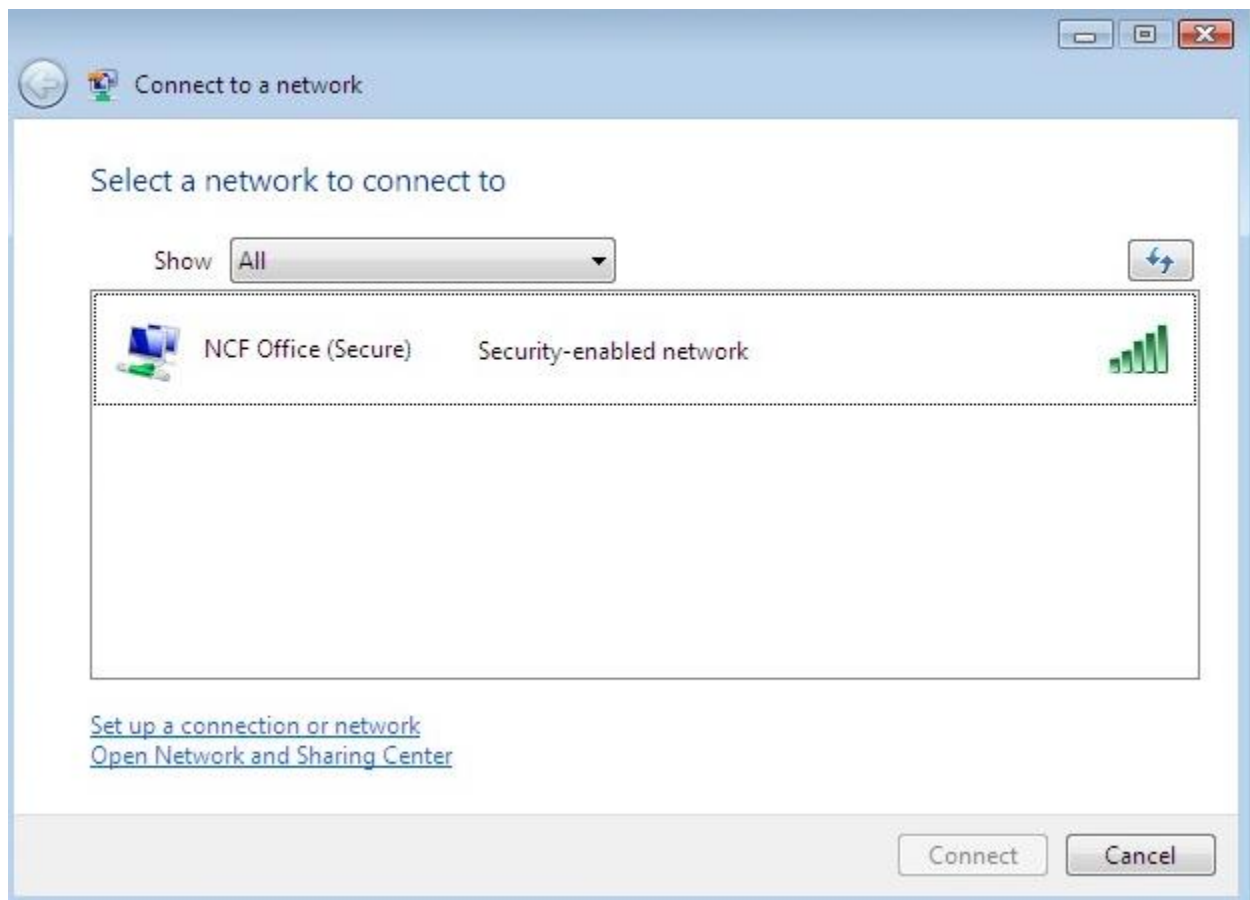


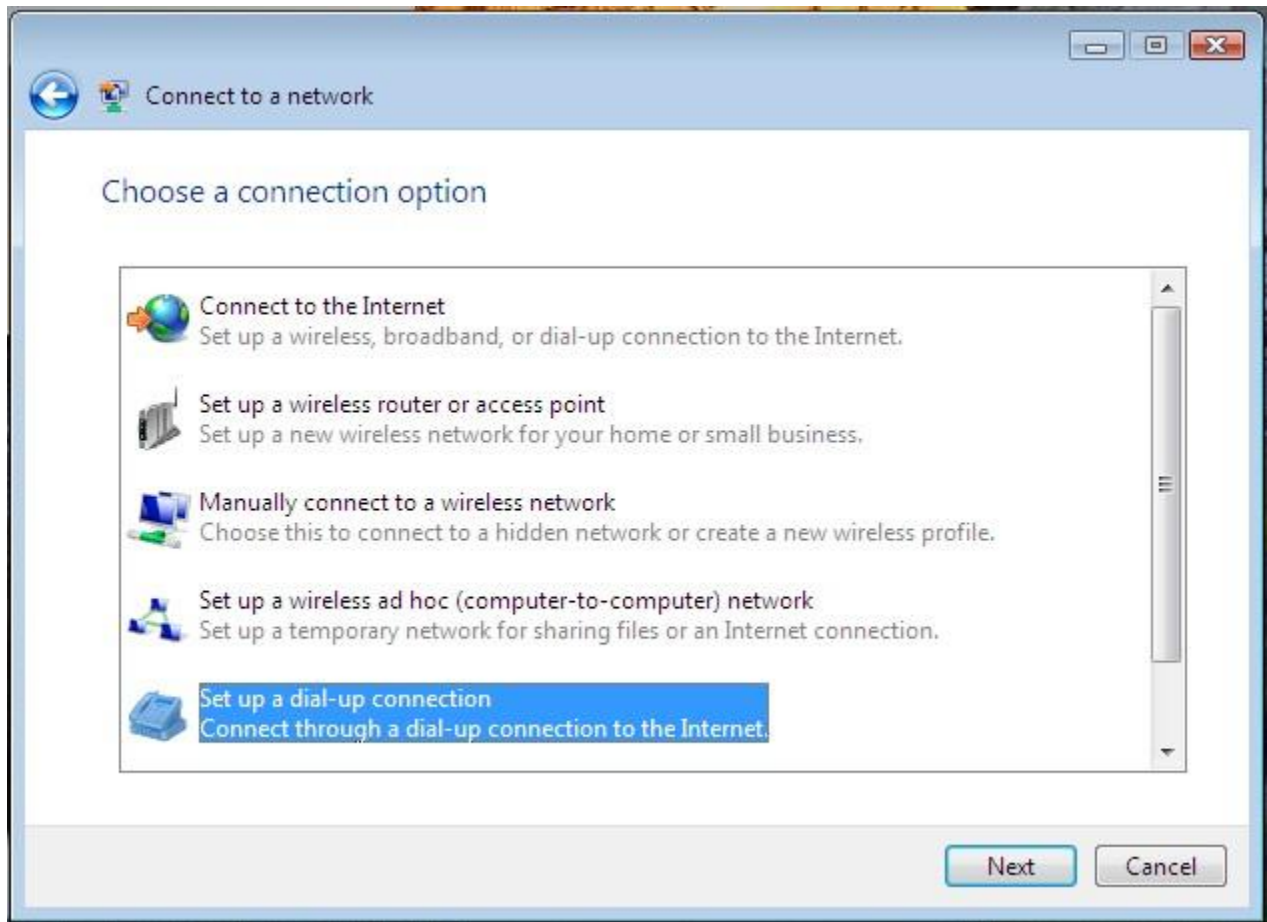
From the **Start** menu, click on **Connect To**.



Click on **Set up a connection or network**.



Click **Set up a dial-up connection**.



Click **Next**. Enter the required information for the connection:

Dial-up phone number

User Name

Password

Remember this password(check this box)

Connection Name

Allow other people to see this connection: Check this if you want this connection for all users on your computer (recommended)

Click **Connect** to create and save this connection.

You have successfully created a Dial-up Connection in Windows Vista.